

SoftPlan Patch Download Instructions

Overview

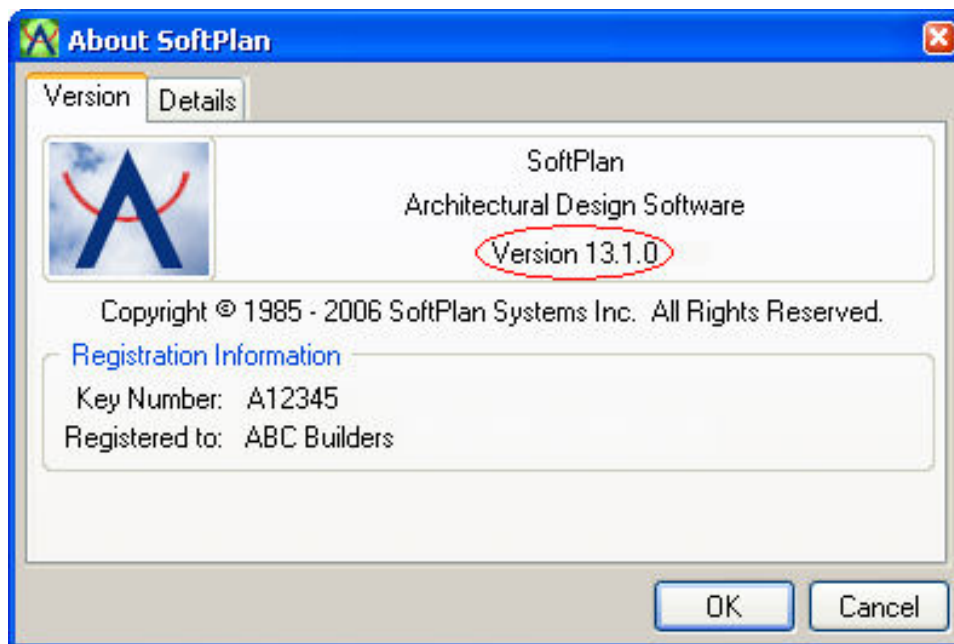
The SoftPlan patches are a method of updating SoftPlan program files with the most current versions. Patches are posted on the SoftPlan web site as new features are added to the SoftPlan program.

The SoftPlan patches cannot be used to upgrade to version 13 from an earlier version (such as version 11 or version 12). See the Upgrade Pricing Page for upgrade information.

Applying a SoftPlan patch will not affect your existing drawings, nor will any libraries (symbol, speed note, opening, etc.) be affected. Your System Configuration will also remain intact. **Only SoftPlan program files are affected by the SoftPlan patch.** The SoftPlan patch will only update those program files which have changed from the previous version.

Which patches do I need?

1. Determine your current SoftPlan version. On the SoftPlan menu bar select *Help* and then *About SoftPlan...* The SoftPlan Version Number is shown on the *About SoftPlan* dialog.

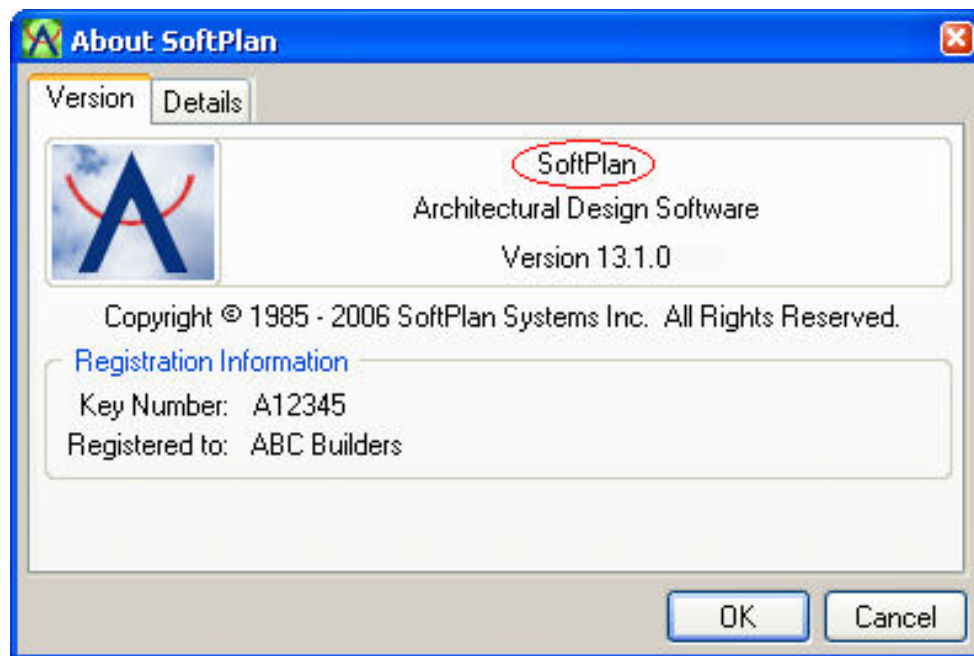


2. Determine the appropriate patch version. Each SoftPlan patch only updates to the next version in sequence. For example, if the *About SoftPlan* dialog shows that you have version 13.1.0 and the most current release of SoftPlan is version 13.2.0, you must first apply the version 13.1.1 patch to your version 13.1.0. Once this is done, the version 13.2.0 patch can then be applied to your (now patched) version 13.1.1.

You do not require any patches prior to your current version, nor do you need the patch for your current version. In other words, if the *About SoftPlan* dialog shows version 13.1.1, you do not need the 13.1.0 or earlier patches, only any that come after 13.1.1.

*Please note: The patch version numbers shown above are used only to demonstrate the sequential nature of the patches. They do not reflect actual patch versions. See **What Patches have been released?** for a list of actual patch versions.*

3. Determine your SoftPlan program type. The *About SoftPlan* dialog will also show whether you are using *SoftPlan* or *SoftPlan Lite*. You only need to download and install the patch which is appropriate for your program type. **The *SoftPlan Lite* patches cannot be applied to a *SoftPlan* program, and vice versa.**



How do I download the patch files?

4. On the **Version 13 patch page**, click on the link for the patch you wish to download. The patch file will begin transferring to your computer. Depending on the size of the patch file and the speed of your modem this could take some time. If your internet connection is broken before the transfer is complete you will need to initiate the file transfer again.

IMPORTANT: If you do not see all the available patches on the patch page, it is possible that your web browser is displaying a cached copy of the patch page rather than the most current page. Use your browser's **Refresh** (sometimes called **Reload**) button to display the most current page.

5. Once the file transfer has been completed, when asked to *Save* or *Open* the file choose **Save**. Most web browsers will then display a dialog asking where the file should be saved. Although you can select any folder, it is recommended that you **save the patch file to your SoftPlan folder**. Contact your ISP or web browser vendor if you are unsure of how to save a file to your hard drive.

IMPORTANT: Please also be aware that some ICP's (Internet Content Provider's) such as AOL®, and ISP's (Internet Service Provider's) may limit the size of files that they will permit you to download to your account. This often depends on the type of account that you have. Contact your ICP/ISP if you have any difficulties downloading files.

6. Repeat these steps if you are downloading more than one patch file.

If you have SoftPlan installed on several computers which are not networked, and you wish to patch them all you will need to copy the SoftPlan patch file to a floppy disk. However, some of the patch files may be larger than will fit on a floppy disk, in which case you will need to use an archiving utility such as PKZip® or WinZip® to copy the patch file across multiple diskettes.