

[Click to view this email in a browser](#)

April 12, 2011

SoftPlan News

Featured News

The newly released SoftPlan 2012 has just been made available in Australia and a recent product review has given a glowing evaluation of 2012.

"The neighbourhood command is possibly the feature SoftPlan excels in. The command allows for the production of a streetscape of multiple buildings that can be positioned on a single lot, providing 3D images for town planning..."

User Dennis Cooke of Good Design Drafting in Carrum, Victoria says: "SoftPlan 2012 has been equally useful when dealing with town planning departments, where the feedback has been very positive. Because he has to draw at least 3 houses - at the side, behind and opposite the property he is designing for, SoftPlan allows him to show the whole neighborhood in perspective so that the town planners can see exactly how the property will look in relation to surrounding houses."

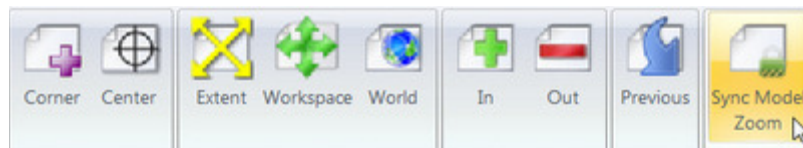
We couldn't be more pleased that this release is so well received!

Link to the full article [here](#).

Toolbox

There are so many new tools in SoftPlan 2012; it's easy to miss a couple that could be huge time savers. One such tool is Sync Model Zoom.

This helpful tool is located in the Zoom menu.



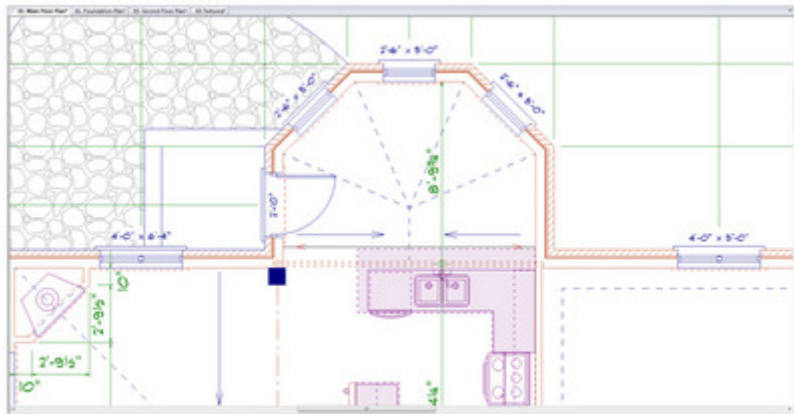
Assemble floors in the model. Select **Zoom > Sync Model Zoom**.

All of the drawings assembled in the model list of the Navigation Window will retain the same zoom scale. This means that if you zoom in to check out a

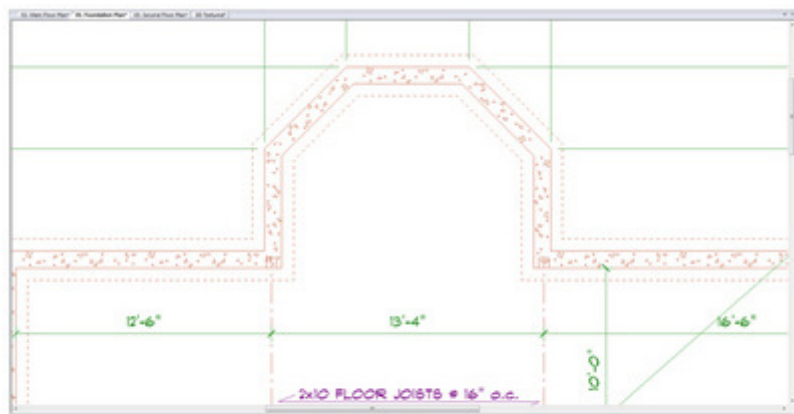


Toll Free: (800) 248-0164
Support: (519) 886-9750
Email: sales@softplan.com

particular area of the main floor, you can check out the same position on the foundation plan simply by selecting the Foundation Plan tab.



Main Floor Plan



Foundation Plan

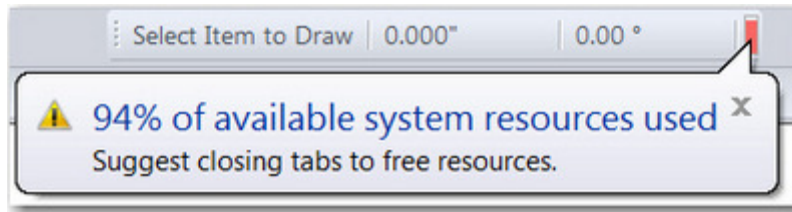
TechTips

Q: Is there a way to know if my system resources are being depleted?

A: Yes, a resource meter has been added to the status bar to help you to monitor your system resources. It appears as a green bar on the toolbar. Positioning the cursor over the meter will display the percentage of available system resources used.



When over 80% of the available system resources are used the resource meter will be displayed in red:



SoftPlan Training Programs

SoftPlan offers [Live Online Training](#) classes. These classes can be attended from the convenience of your own office or home computer. Each class ends with a Q&A session where you can ask questions about any topic. Class size is around 14 people and these classes have been a huge hit so register today before classes fill up.

Another Training option is the hugely successful [Training DVDs](#). For those of you with a hectic schedule and want the convenience of owning a DVD you can watch and re-watch, consider purchasing these helpful DVDs. The instructor's voice will guide you through a house plan from start to finish. These DVDs are tailored to various skill levels so you can be sure you're getting your money's worth of information.

[Click here](#) to forward this email to a friend

