

How do I download the update file?

1. On the **Key Driver Update Page**, click on the "Key Driver Update" link at the bottom of the page. The update file will begin transferring to your computer. Depending on the speed of your modem this could take some time. If your internet connection is broken before the transfer is complete you will need to initiate the file transfer again.
2. Once the file transfer has been completed, when asked to *Save* or *Open* the file choose **Save**. Most web browsers will then display a dialog asking where the file should be saved. Although you can select any folder, it is recommended that you **save the update file to your SoftPlan directory**. Contact your ISP or web browser vendor if you are unsure of how to save a file to your hard drive.

Please be aware that some ICP's (Internet Content Provider's) such as AOL®, and ISP's (Internet Service Provider's) may limit the size of files that they will permit you to download to your account. This often depends on the type of account that you have. Contact your ICP/ISP if you have any difficulties downloading files.

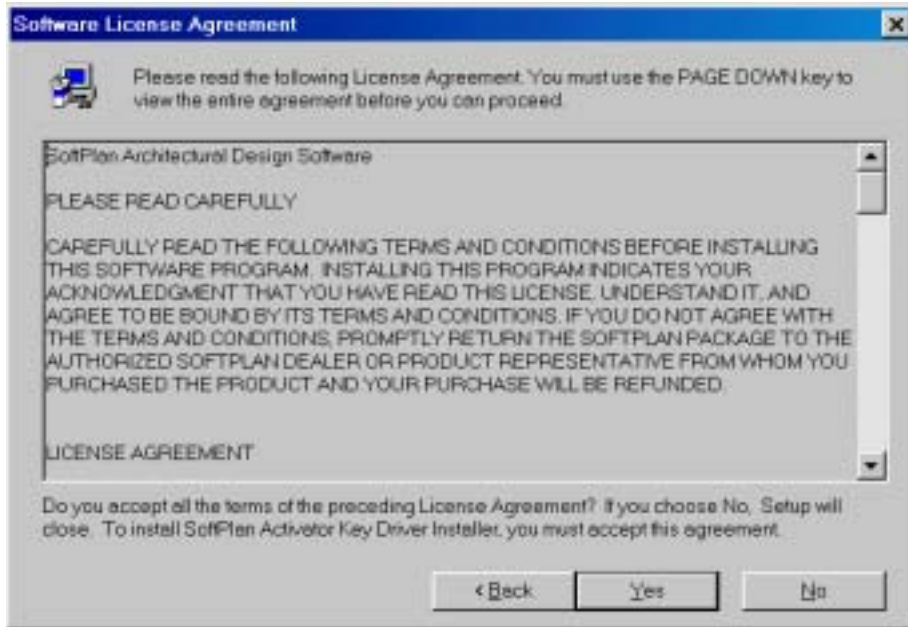
How do I apply the update?

1. Once the update file has been saved to your hard disk, use Windows Explorer (Start > Programs > Windows Explorer) to browse to the directory where the update file was saved. **If SoftPlan is running, exit the program before proceeding**. Right click on the update file icon and select **Open**. This will start the update process.
2. The update *Welcome* dialog is shown.



Click **Next** to continue.

3. The *Software License Agreement* dialog is shown. You must accept the license agreement to install the SoftPlan Activator® key driver update.

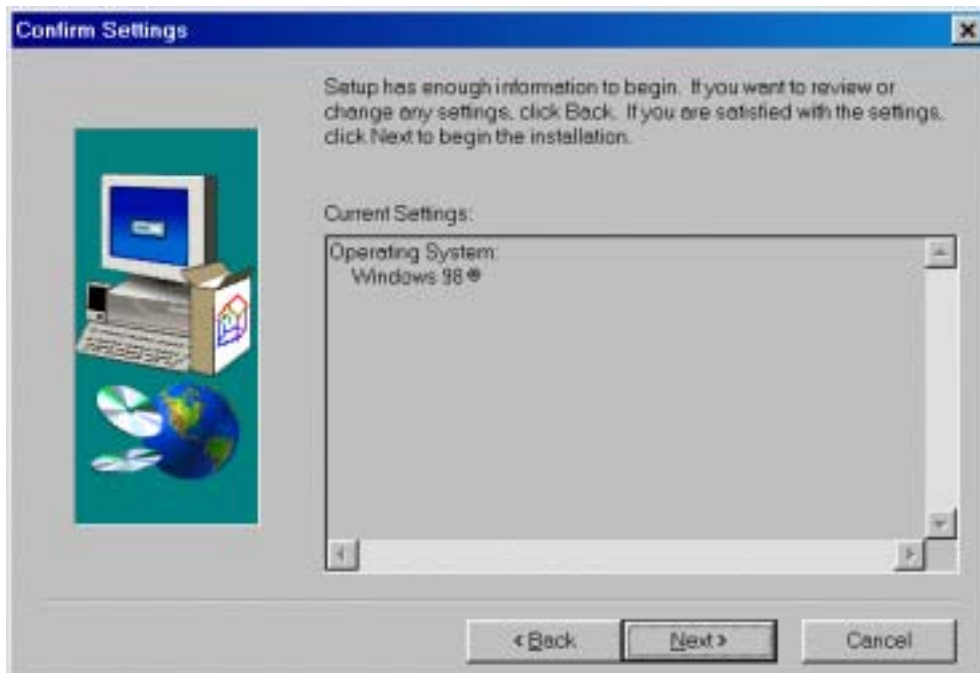


Click **Yes** to continue after reading the license agreement. *Note: The Yes button is not enabled until you use the PAGE DOWN key to scroll down to the end of the license agreement.*

4. The *Contacting SoftPlan* dialog is shown.

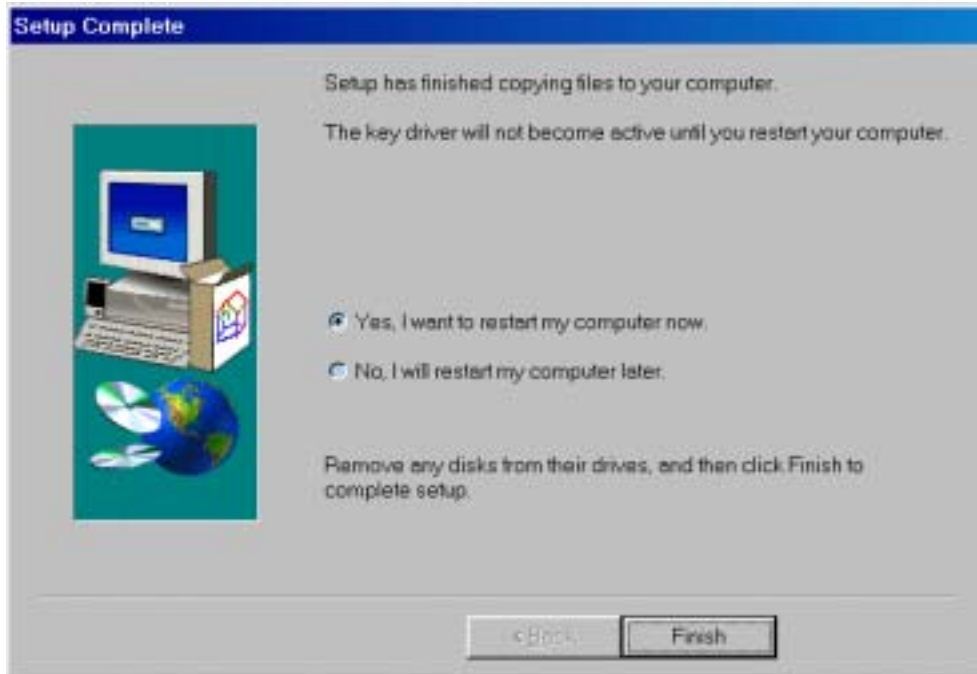
Click **Next** to continue.

5. Setup will display your operating system on the *Confirm Settings* dialog.



Click **Next** to continue. The update process will begin.

6. Once the update files have been copied to your computer, the *Setup Complete* dialog will be displayed.



Click **Finish** to exit setup. If you chose to restart your computer now, first close any open programs.

Important: You must **reboot your computer** in order for the update changes to take affect.

Please Note: actual program dialogs may differ slightly from those shown.